





# So, what is SEND?

- ❖ SEND stands for Special Educational Needs and Disability
- ❖ SEND can affect a child or young person's *ability to learn* (some SEND children may find academic attainment difficult – especially without support)
- ❖ SEND can also mean that a child has difficulty with *physical ability*
- ❖ SEND can affect a child or young person's *ability to socialise and make friends*
- ❖ SEND can affect a child or young person's *ability to communicate effectively* – This can sometime lead to frustration and potential meltdowns
- ❖ SEND can affect a child or young person's ability to *concentrate*





# How is SEND identified? What do professionals look out for?

Nurseries, schools and other educational settings should look to identify pupils making less than the expected progress given their age and individual circumstances.

SEND traits can often include poor concentration, delayed speech and difficulty with communication, struggle with change, poor social interaction.

**HOWEVER: Slow progress and low attainment does not necessarily mean that a child or young person has SEND!**





# Autism can look like this... AND this:





## Sensory Processing – what can this look like?

Not aware of pain – I often touch or hold people too hard

I have difficulty dressing myself

I cry and shield my eyes from the sun and other bright things

I hate having my hair washed / brushed / cut

I don't like having my finger or toenails cut

I don't like crowds

I have trouble focusing on things and often lose concentration

I may have poor fine gross motor skills and find cutting and writing difficult

I can be a fussy eater as I don't like certain textures

I can have selective hearing or difficulty focusing on sounds

I don't like having my teeth brushed

I can be overly sensitive to sounds such as vacuums and blenders





# What are meltdowns?

Autism meltdowns are **not** caused by bad parenting.

An autism meltdown may look similar, but is **not** a 'temper tantrum'.

A meltdown is an **involuntary** response to an overwhelming situation. A tantrum is when a child wants a particular outcome.

Every autistic child has **different** triggers for meltdowns.

A meltdown can be resolved by **reducing distress** which is overwhelming the child.

Autistic children experience sensory input **differently** to non-autistic children.





An autistic meltdown is usually caused by a sense of overload. Your child will have no control over their reaction. They may not be able to tell you when they feel overwhelmed.

Learning what triggers a meltdown can help you feel more prepared. Every child is different, but some common triggers include:

- **Sensory overload or under stimulation**. This is when a child is sensitive to sound, touch, taste, smell, visuals or movements.
- Changes in routine or dealing with an unexpected change. People with autism often prefer to have a routine in place. They can be sensitive to even small changes.
- Anxiety or **anxious feelings**.
- Being unable to describe what they need or want. Communication is often non-typical for those with autism. It can feel frustrating for them when they're misunderstood.

**Keeping a behaviour diary** can help spot possible patterns. Note down when meltdowns happen. Write down what you were doing, where, and your child's reaction.





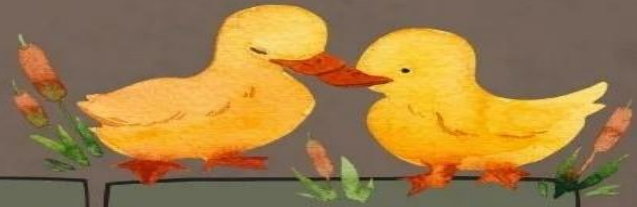
# Meltdown Recovery Tips



Cancel any expectations for the rest of the day (or longer)



Rest: make a nest, lie down, sleep



Make a meltdown recovery playlist



Engage in simple, comforting activities (coloring, LEGO, etc.)



Do not be scared to utilize AAC



Find what works for YOU (TV, quiet, being with someone, being alone, etc.)



# Sensory: Birmingham Community Healthcare (bhamcommunity.nhs.uk)

Sensory processing relates to the body's ability to take in information from the senses, organise the information within the brain and respond appropriately within the environment.

Some children have difficulties in the way in which they process sensory information. For example, some children's systems can take in too much information, so they become overwhelmed by their environment.

## Sensory Videos

Please find below a set of six sensory videos, made by our team, covering a range of practical advice.



# What is DLA?

**Disability Living Allowance (DLA) for children may help with the extra costs of looking after a child who:**

- is under 16
- has difficulties walking or needs much more looking after than a child of the same age who does not have a disability

DLA should be used to benefit your child and their disability. This could include putting it towards heating and their special dietary requirements. It could be used towards paying for respite whether that be to a specific organization or person that can support you and your child.

It could be used to help pay towards meeting their sensory needs with aids and toys or for something like swimming lessons.

There are many ways to utilize your child's DLA, but most importantly, it must be beneficial to them.





# What is an EHCP?

An Education Health and Care Plan (EHCP) is **a legal document which is established to describe the needs, detail the provision and name an educational placement for a child or young person.**

# What is an SSPP?

A SEND Support Provision Plan (SSPP) is **a document created by the local authority to assist schools in providing the correct provision for those children and young people with more complex needs.**





# What does an EHCP include?

1. **My Story'** This is background information and is written by the child and parents / carers, young person and / or parents / carers and should include all the views of the family. Any input from professionals should be indicated as such.
2. **Special Educational Needs.** This section will describe all of the needs under 4 headings: Communication & Interaction, Cognition & Learning, Social, Emotional & Mental Health, Physical and Sensory Needs. The strengths and skills of the child or young person can also be mentioned here.
3. **Health needs**
4. **Social Care needs**
5. **Outcomes.** These are divided into the same for headings as used in 2 and should include both short-term (within the next 12 months) and long-term (by the end of the next key stage) outcomes.
6. **Special Educational Provision.** This section should clearly describe all the additional support, therapies and resources that have been identified to meet the needs listed in 2. The Code of Practice expects any provision to be specified and quantified so that it is clear what additional support and resources are required to meet needs. Provision will be listed under the heading of Curriculum, Environment and Facilities, Equipment and Resources, and Staffing Arrangements.
7. **Health provision.** Some provision that is arranged through health professionals (Physiotherapy, Occupational Therapy or Speech and Language Therapy) will usually be seen as educational and so should be in Section 6.
8. **Social Care provision.** This should refer to any social care interventions (e.g. respite, Direct Payments).
9. **Placement.** This is the name of the educational establishment where the special educational provision is to be made.
10. **Personal Budget.** Any provision that is made via such a budget, rather than through the educational placement, is noted here.
11. **Appendices.** All the reports obtained to inform the first EHCP, and then later reports and Annual Review reports will be listed here.



# Food for Thought





# How does Early Help support families with SEND?

- Early Help provides **Early Intervention**
- Can support parents with dealing with emotional and challenging issues **via signposting/referrals**
  - Can ensure that the child's voice is heard – help express their wishes and feelings **(with help from educational settings)**
- Early Help can incorporate a whole family approach – provides support for siblings and the wider family to help address issues and break down barriers
- Early Help uses a multi-agency approach. It works alongside all agencies that are involved with the family whether it be school, health or external agencies
- It helps to identify objectives the family may have and offer ways to address them and action them to meet change and sustainability

To access Early Help, **a Family Connect Form must be completed** – approach your school or complete a self-referral.





BIRMINGHAM CHILDREN & YOUNG PEOPLE'S PARTNERSHIP



Hall Green Families



Selly Oak Families

# HELP FOR ALL FAMILIES IN BIRMINGHAM



Food & Energy



Youth Support



Domestic Abuse



Emergency Funding



Money & Debt Advice



Data & IT



Under 5's Support



School Uniforms & Clothing



Parenting



Special Needs & Disabilities



Bereavement



Housing



Sexual Health



Mental Health



Play



BIRMINGHAM CHILDREN & YOUNG PEOPLE'S PARTNERSHIP



BIRMINGHAM CHILDREN & YOUNG PEOPLE'S PARTNERSHIP



### EDGBASTON

EarlyHelpEdgbaston@gatewayfs.org  
0121 456 7821

### NORTHFIELD

EarlyHelpNorthfield@gatewayfs.org  
0121 456 7821

### ERDINGTON

ErdingtonFamilies@compass-support.org.uk  
0121 748 8199

### PERRY BARR

BirminghamEarlyHelpPerryBarr@family-action.org.uk  
07385 464 482

### HALL GREEN

HallGreen.Families@greensquareaccord.co.uk  
07570 953 519 (9:30am to 4:30pm)

### SELLY OAK

SellyOak.Families@greensquareaccord.co.uk  
07483 090 434

### HODGE HILL

YardleyHodgeHillEH@barnardos.org.uk  
0121 289 4875

### SUTTON COLDFIELD

SuttonColdfieldEarlyHelp@compass-support.org.uk  
0121 748 8199

### LADYWOOD

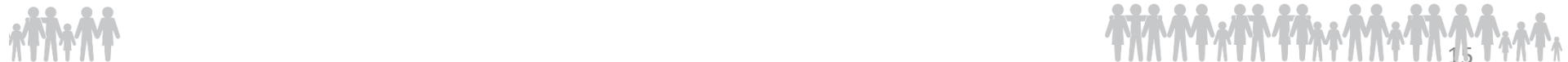
BirminghamEarlyHelpLadywood@family-action.org.uk  
07816 086 607

### YARDLEY

YardleyHodgeHillEH@barnardos.org.uk  
0121 289 4875



PLEASE CHECK YOUR EARLY HELP DISTRICT BY USING OUR POSTCODE CHECKER



**NEW!**

**NHS**  
Birmingham  
Community Healthcare  
NHS Foundation Trust

# Children's Occupational Therapy advice line

**Launches: 9th September 2019**

An Occupational Therapist will be able to offer practical therapy advice, strategies and support to schools, parents/carers and other professionals in relation to a child/young person's functional and Independence skills.

The phone line will be open Monday-Friday, 9am-4pm

The child or young person must be:  
Aged 0-18 years (up to 19 only if in full-time special school education)  
Registered with a Birmingham GP

**Phone number: 0121 683 2325**






Best Care  
Healthy Communities

Designed by CreativeHub, BHC GraphicDesign@BhamCommunity.nhs.uk • Ref: 00051 • 28.08.2019

**NHS**  
Birmingham  
Community Healthcare  
NHS Foundation Trust

**SEND**  
BHC staff must contact  
Graphic Design for all printing  
Requests via: [Creative.hub@nhs.net](mailto:Creative.hub@nhs.net)

# SEND Therapy Team Early Years

**What we offer...**

- Speech and Language Therapy Support
- Occupational Therapy Support
- Online Resources
- Speech and Language Occupational Therapy
- Supporting Stay and Plays
- Attend Area SENCo Surgeries
- Training for Early Years Staff
- SENCo and Parent Advice Meetings
- Family Webinars





Scan the QR codes or visit [www.localofferbirmingham.co.uk](http://www.localofferbirmingham.co.uk) to access online resources and useful websites

Email us for more information: [bhc.sendtherapy@nhs.net](mailto:bhc.sendtherapy@nhs.net)

Best Care  
Healthy Communities

Designed by CreativeHub, Clinical Excellence, Birmingham Dental Hospital  
Email: creative.hub@nhs.net • Ref: 01784 • 10 January 2022

**For further information on sleep please visit:**

**The Children's Sleep Charity:**  
For further information and advice on sleep, please [click here](#) to visit the children's sleep charity website.

**Cerebra UK:**  
We understand that if you have one child that doesn't sleep, the whole family suffers. Cerebra's range of sleep services will help your child and everyone in your family get a good night's sleep.

[Click here or the button below to download a self-care skills advice pack.](#)

[Cygnet Programme Birmingham - Family HUB | Barnardo's \(barnardos.org.uk\)](#)

[Birmingham PHAB Camps \(bhamphabcamps.org.uk\)](#)

[Kings Heath Parent Carer Support Group Tickets, Multiple Dates | Eventbrite](#)

[Services | We Are Able CIC UK](#)

**NHS**  
Birmingham  
Community Healthcare  
NHS Foundation Trust

# Children's Speech and Language Therapy Advice Line

**Call: 0121 466 6231**  
Open Monday to Friday 9am - 4pm

We can offer advice and strategies to support parents, carers, schools and other professionals in relation to a child or young person's communication needs or eating and drinking concerns.

The child or young person you are calling about must be:  
Aged 0-18 years (or up to 19 only if in full time special school education)  
Registered with a Birmingham GP or Birmingham School  
Visit our webpage for useful advice, strategies and support:  
[www.bhamcommunity.nhs.uk/childrens-SLT](http://www.bhamcommunity.nhs.uk/childrens-SLT)



Best Care  
Healthy Communities

Designed by CreativeHub, Clinical Excellence, Birmingham Dental Hospital  
Email: creative.hub@nhs.net • Ref: 00052 • 28.08.2019

**NHS**  
Birmingham  
Community Healthcare  
NHS Foundation Trust

**SEND**  
BHC staff must contact  
Graphic Design for all printing  
Requests via: [Creative.hub@nhs.net](mailto:Creative.hub@nhs.net)

# SEND Therapy Team Schools

**What we offer...**

- Speech and Language Therapy Support
- Occupational Therapy Support
- Online Resources
- Speech and Language Occupational Therapy
- Training for School Staff
- SENCo and Parent Advice Meetings
- Attend Multi Agency Planning Meetings
- Family Webinars





Scan the QR codes or visit [www.localofferbirmingham.co.uk](http://www.localofferbirmingham.co.uk) to access online resources and useful websites

Email us for more information: [bhc.sendtherapy@nhs.net](mailto:bhc.sendtherapy@nhs.net)

Best Care  
Healthy Communities

Designed by CreativeHub, Clinical Excellence, Birmingham Dental Hospital  
Email: creative.hub@nhs.net • Ref: 01784 • 10 January 2022

All Age Autism Support Service

## SERVICE DIRECTORY

- Explore specialised local services for autistic people of all ages in Birmingham and Solihull.
- Tailored for autistic people, their families and care givers.
- Listings include family support groups, mental health services, and adult assistance.
- Co-produced in collaboration with experts by experience
- Podcasts, community events, sports activities, and programs designed specifically for autistic people.



Scan the QR code to access the Service Directory directly or visit: [www.aasdirectory.co.uk](http://www.aasdirectory.co.uk)

Landau Birmingham and Solihull Integrated Care System NHS



# SEND Signposting for Families & Professionals

## Pre-paid parenting course - “Understanding your child with additional needs” - use the access code “COMMUNITY”

14 Modules

Course  
3b. Understanding your child with additional needs

This online course is for parents with a child with additional needs. It is for parents...

Learn More Buy Course

Enter code **Apply ACCESS Code**

Sparkbrook Children's Zone

Scan for more info:



sparkbrookchildrenszone.org.uk  
scz@grensquareaccord.co.uk



Supporting children and families to live happy, healthy lives.

We offer appointments, advice and community activities in Balsall Heath, Sparkbrook and Sparkhill.

Translation services available

Children and young people between 0-16 years can come and see a Children's Nurse and Doctor. We help with lots of different problems, including constipation, eczema, and asthma.

Your whole family can get support from our Early Help Family Support Advisers. We provide advice on parenting, debt, healthy eating, and much more.


## Free Parenting Groups & Courses

Support for all parents and carers with children from pregnancy to 19 (25 with special educational needs & disabilities), both online and face-to-face.

- Are you expecting a baby?
- Have you recently had a baby?
- Do you want support to better understand your child or teenager's behaviour?



Scan the QR code for details about what's on near you.



familyhubs@birmingham.gov.uk  
birmingham.gov.uk/familyhubs

### SUPPORTED INTERNSHIP PROGRAMME

BIRMINGHAM CITY COUNCIL - 14-19 FULL PARTICIPATION AND SKILLS TEAM

If you, or someone you know, would like to apply, please contact the Supported Internship Programme at Birmingham City Council using the link or email below

Expression of Interest Form | [14-19Supported.Internship@Birmingham.gov.uk](mailto:14-19Supported.Internship@Birmingham.gov.uk)

A structured programme which supports young people with Special Educational Needs and Disabilities (SEND) and/or who have an Educational Health Care Plan (EHCP) aiming to lead to paid employment.


We are looking for young people aged 16 to 24 to start on the programme

JOB COACH/EMPLOYMENT PROVIDER	THE EDUCATION PROVIDER
<ul style="list-style-type: none"> <li>Ensures every intern is fully supported and individually trained</li> <li>Works closely with host placements to provide an induction programme, buddy system, work adaptations and problem solving with the interns</li> </ul>	<ul style="list-style-type: none"> <li>Face to face support first thing in the morning and discusses the day's placement</li> <li>Builds in any educational support/training to meet the needs of the intern</li> <li>Supports them from an educational perspective</li> </ul>

### HOST PLACEMENTS

We currently have host placements and are looking to expand our provision. If you are an employer or council directorate wishing to find out more about becoming a host placement provider, please contact the email below.

[14-19Supported.Internship@Birmingham.gov.uk](mailto:14-19Supported.Internship@Birmingham.gov.uk)






# SEND Signposting for Families & Professionals



## Early Help Autism Service

### Who We Are

We are a commissioned service working in partnership with Birmingham Children's Trust, providing intensive support for families of children and young people aged 5-25 who have a formal autism diagnosis or are currently on the autism assessment pathway.

### Intensive Support Programme

This programme is tailored to each family's unique needs, with a specific focus on autism. We work alongside parents and carers to build on existing strengths, deepen understanding, and explore practical strategies that work for their family. We can deliver direct sessions with the young person and sibling autism awareness sessions as part of our wider offer.

Support can be offered between 4 to 12 weeks, through a mixture of weekly and fortnightly sessions. These can take place at home, school, or your local children's centre.

Direct referrals for this support must be made by an Early Help lead professional.



### Areas of support include:

- Sensory processing and strategies
- Behavioural understanding and strategies
- Sleep routines and hygiene
- Communication and PECS/Makaton support
- Supporting anxiety and low mood
- Responding to sexualised behaviours
- Child-Friendly Autism Awareness
- 1-1 Cygnet delivery
- Signposting to local resources



### Cygnet Autism Support Programme

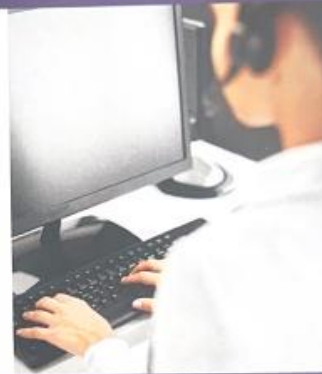
Our service offers the group Cygnet Programme for parents and carers, with the option to self-ref. For more information or to book a place, please click [here](#) or scan the QR code.



We are the leading charity in the West Midlands for autistic people.

**AWM Information Line provides confidential information, advice & signposting to autistic adults, parents, carers, & professionals. Our trained team will provide advice & support to people who are diagnosed or who may be autistic. Call or email us.**

0121 450 7575



Callers will find experienced, understanding staff who offer a listening ear and who can provide information about autism and local support services.

### Opening Hours

Mon - Fri: 9am - 5pm  
Sat & Sun: Closed

If you would prefer, email [info@autismwestmidlands.org.uk](mailto:info@autismwestmidlands.org.uk) and we will answer by email or call you back.



Birmingham and Solihull



[www.autismwestmidlands.org.uk/](http://www.autismwestmidlands.org.uk/)



## TEEN AUTISM CONFIDENT

Birmingham and Solihull 13 -18yrs

Teen Autism Confident is a free 8-week program, with one-to-one meetings for participants on the first and last week, and 6 group sessions. The courses have up to 10 participants per program.

This course offers an opportunity to learn more about autism in a small, supportive, group setting. It provides an opportunity to discuss individual experiences, hear the experiences of others, and identify strategies that could help in your day-to-day life.

### Who can attend:

- Teenagers (over 13 years) with an autism diagnosis
- Your post code comes under Birmingham or Solihull council.
- You are able to commit to attend weekly sessions.

### Topics covered:

- Understanding Autism
- Social Communication
- Sensory Awareness
- Anxiety
- Self-esteem, Self-image and happiness
- Transitions, Change and the Future

Sign up for: Online sessions, Kings Norton location or Solihull location

The course start date will be between now and JAN 2025.

If you have any questions please contact Amy at [amys@autismwestmidlands.org.uk](mailto:amys@autismwestmidlands.org.uk)

Please note: The Early Help Autism Service offers autism-focused learning and strategies for families. We do not provide general family support or direct care services, but will signpost to relevant resources where possible. If you're looking for wider family support, the Birmingham Local Offer website has more information about Early Help services available in your area. Alternatively, you can enquire at your child's school or local children's centre.

Get in Touch: [earlyhelp@autism@barnardos.org.uk](mailto:earlyhelp@autism@barnardos.org.uk)





# SEND Signposting for Families & Professionals

[Home – ERIC](#) – this helps families with toileting

## **Autism West Midlands**

AWM have a helpline advisors will signpost and give information, advice and guidance to all adults, professionals, parents and carers. AWM run free face-to-face SEND parent/carer sessions with SEND professionals and other SEND parents. An informal session (no diagnosis needed, but on the pathway would be beneficial so information makes sense) where parents can ask questions, gain information and be signposted to further support <https://www.eventbrite.co.uk/o/autism-west-midlands-4516901521>

## **Birmingham Resilience, Educations and Wellbeing Service (BREWS)**

ADHD specific - it is a group to support families living with ADHD (or on pathway), ran by women who have ADHD. They have free face-to-face and online groups happening in Sparkbrook and other wards across the city. CEO, Nora, was diagnosed at 50 years old with three children, so she prides her service on her ability to empathize with mothers across the city.

## **SEND Local Offer Website**

There are a range of activities on offer across the city, please see here for more information:  
<https://www.localofferbirmingham.co.uk/leisure/>

## **ADHD/Autism Group at All Saints Youth Project**

All Saints Youth Project in Kings Heath have lots of support available. They run Family Support Drop-In sessions, Non-Violence Resistance Training, Teen Positive Parenting Programme, and an ADHD/Autism Support Group. Please see here to refer: <https://www.allsaintsyouthproject.org.uk/asypreferrallform> or give Debbie/Ian a call to discuss this further: 0121 443 1842. They're an amazing, vital service with a fantastic environment and track record. We always recommend them to families in our locality every day and often get feedback from families saying how supportive, understanding and helpful they have been. You can also see a timetable here: <https://www.allsaintsyouthproject.org.uk/family-support>

## **[Midland Mencap](#)**

They have a range of support available for families in Birmingham.





# SEND Signposting for Families & Professionals

## **Children's Quarter, Parks4Play & others:**

The Children's Quarter is a local organisation that is inclusive of all children and has information on local agencies that can offer activities for SEND families. They are based in Kings Heath. Please see their website for more information:

<https://childrensquarter.org/>. Parks4Play is extremely popular across our locality, you can see their service here:

<https://parksforplay.org/>

## **Art Therapies UK**

A little more on this organisation can be found [here](#), and families can [self-refer here](#).

## **Balsall Heath Children's Action Team Support (CATs)**

This small team have done fantastic work with children across our locality for many years. We have not made contact for a while due to the popularity of the Barnardo's Autism Service but they cater for families and carers of children and vulnerable adults with disabilities. They used to host community activities, parental support and play. You can contact 07889 930040, 0121 440 1007 or 07775 712788. You can also email: [info@bhcats.org.uk](mailto:info@bhcats.org.uk).

## **SEND SOCIALS**

SEND Socials Birmingham provide social opportunities, activities and events for families of children with additional needs to participate in. They offer activities on evenings, weekends and during the school holidays for all the family. Their Facebook group is here, I strongly encourage SEND parents to join if they can:

<https://www.facebook.com/groups/472087749930348/?ref=share>

## **Autistic Girls Network**

We are a small registered charity working to support, educate, and bring change. There are resources on here to help, and it will benefit you to take a different route through the site depending on the support you need. There are routes to learn about autistic girls, gender diversity among autistic people, as well as routes to follow if you're an autistic woman, a parent, friends and family, teachers and other professionals or employers.

[Welcome to the | Autistic Girls Network](#)





# SEND Signposting for Families & Professionals

There is an organisation called **Bring it on Brum!** that offer activities during half-term holidays for free should you meet the eligibility requirements (your child must be in receipt of free school meals). You can take a [look here](#) to learn more about the SEND provision and here to see more on how families obtain their codes: <https://www.bringitonbrum.co.uk/codes/>

## **Birmingham Parent Carer Forum**

Voluntary group of Birmingham parent/carers whose purpose is to become the bridge between services and families and a collective voice representing all members and all disabilities. You can get in touch with them via Facebook for ease, see more on their website: <https://www.birminghampcf.org/>

## **Resources for Autism**

They have a small number of services running in Birmingham, informal meetings for parent/carers, clubs, etc: <https://resourcesforautism.org.uk/parent-carer-support-drop-in/>

## **SENDIASS**

The Birmingham Special Educational Needs and Disability Information, Advice and Support Service (SENDIASS) offers impartial information, advice and support families with children and young people with special educational needs or disabilities. Here is a YouTube video that can explain the service further to families:

<https://www.youtube.com/watch?v=54R4cDbX6L8> To contact SENDIASS to ask questions: 0121 303 5004 (8:45am to 5pm, Monday to Friday), or email [sendiass@birmingham.gov.uk](mailto:sendiass@birmingham.gov.uk).

## **KIDS**

Family Groups available across the city: *"Our family groups are all about bringing parents, carers, and children together for fun, friendship, and shared adventures. It's a chance to make memories and connect with others who understand your situation."* <https://www.kids.org.uk/parent-family-support>

## **SENtre**

A play and therapy centre specifically designed for children with SEND called SENtre: <https://thesentre.co.uk/>





# SEND Signposting for Families & Professionals

## SENAID

supports children and young people with SEND and their families. They provide tailored guidance, intervention services, and resources to help families navigate challenges, secure vital support, and ensure better outcomes for their children. Services that SENAIID provide include emotional wellbeing support and advocacy. To refer a child, agencies can email [support@senaid.co.uk](mailto:support@senaid.co.uk) with consent from the family. Provide contact details and overview of concerns. Families can also self refer. Parents/carers/educators can call directly 07386219724. This number is also the helpline and can be contacted for any enquiries.

**Beacon Family Service:** Not all of their services run in Hall Green & Selly Oak, but the following ones do:

**Project Salam** - Support for refugee families in Birmingham and West Midlands (Syria, Afghanistan and Ukraine)

Working with professionals and directly with families, Beacon use play therapies like Theraplay to focus on the parent-child relationship, which can have a transformative impact on families' sense of safety and wellbeing. If you have a family meeting this criteria, you can contact [peppy@beaconservices.org.uk](mailto:peppy@beaconservices.org.uk) or phone 0121 270 0593 to discuss a referral for this support.

## 14-19 Supported Internship Programmew:

This programme supports young people (TEENS) with SEND and/or an EHCP aiming to enter paid employment. They have had placements at Amazon and Royal Mail in the past!

**Respite/Short Breaks Funding** - please be aware you need to see what applies to you in the links below

## Birmingham Local Offer - Direct Payments

[Personal Budgets and Direct Payments - Local Offer Birmingham](#)

**Birmingham Children's Trust** – Information for Families & Carers - Short Breaks, OT referrals, Home Support, Direct Payments and more

[Document downloads - Information for families and carers | Birmingham Children's Trust](#)

**Scope** – Have quite a bit of information about disability grants and does mention respite.

[Disability grants | Disability charity Scope Uk](#)





BIRMINGHAM  
CHILDREN &  
YOUNG PEOPLE'S  
PARTNERSHIP



Green  
Square  
Accord



Hall Green  
Families



Selly Oak  
Families

# Thank you!

# Questions?

